

MASTER OF ARTS IN LANDSCAPE ARCHITECTURE (MLA)

DUDÁS NIKOLETTA
IVAN JUAREZ
MELIKE KAYMAZ



SENSORY TRAILS NORMAFA

Author: Ivan Juarez

Supervisor: Dr. Balázs Almási

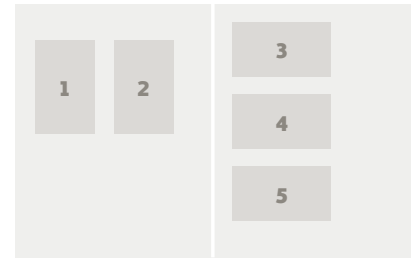
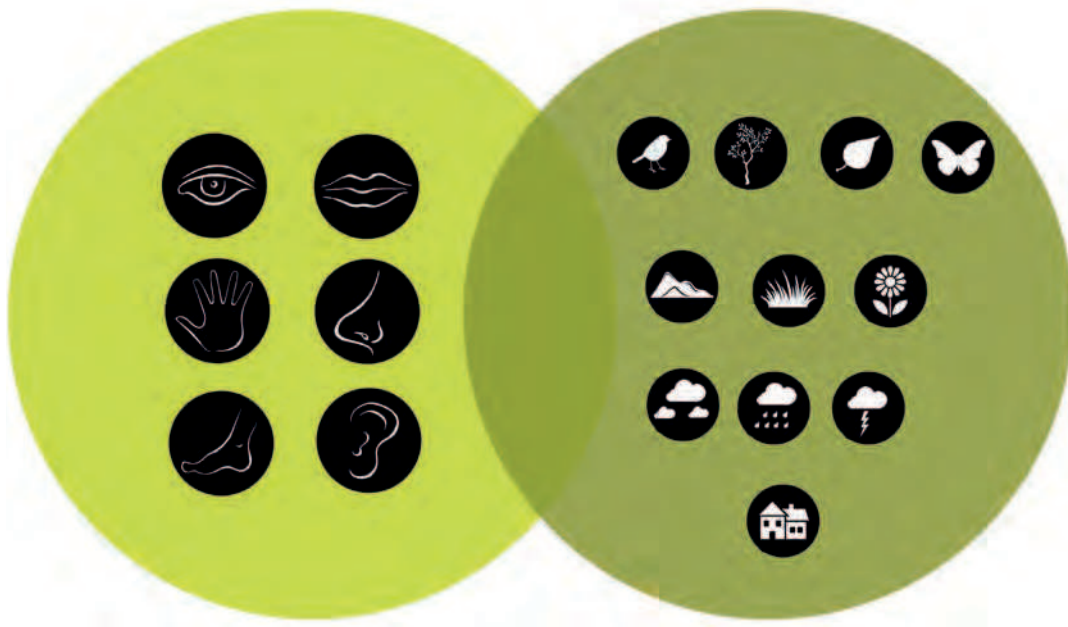
The diploma thesis focuses on the development of new approaches to the natural and cultural landscape of Normafa, a protected forest located in the XIIIth District of Budapest, which functions also as a public park for the residents of Hungary's capital. The project proposes the conceptualization and design of a series of sensory trails and site-specific interventions that create new dialogues to perceive the landscape through senses and perceptions.

The project is proposed as an instrument that utilizes senses as a method of approximation to the site by increasing the perceptions to the landscape through the connection of nature with multi-sensory experiences: scents, textures, sounds, tastes and scenes.

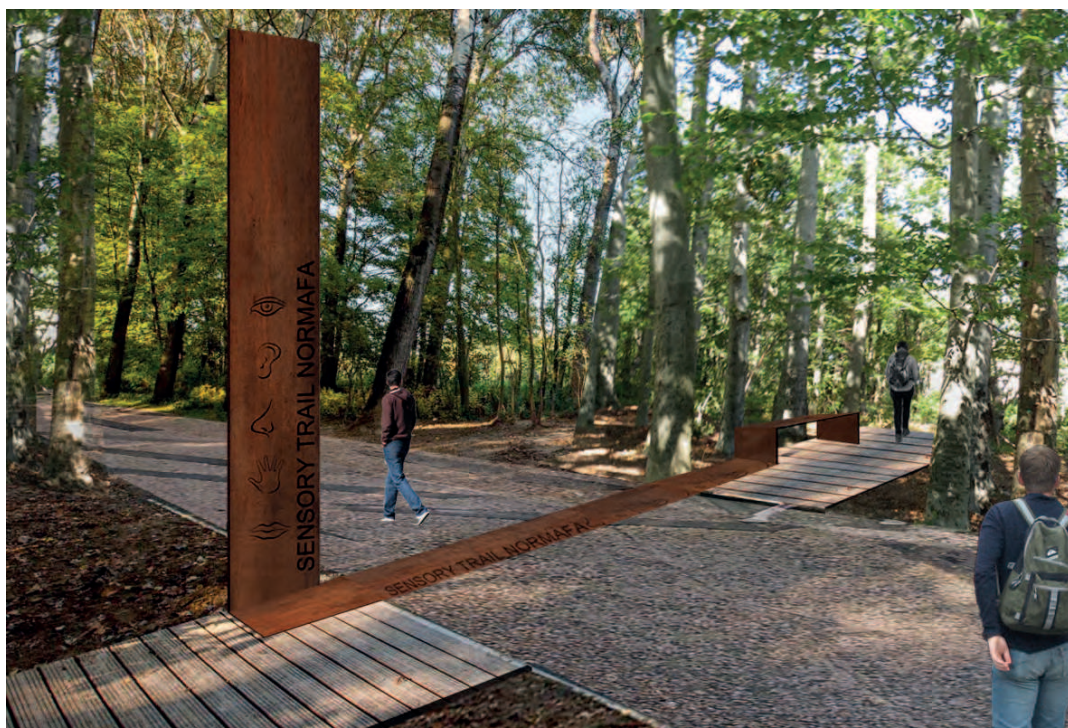
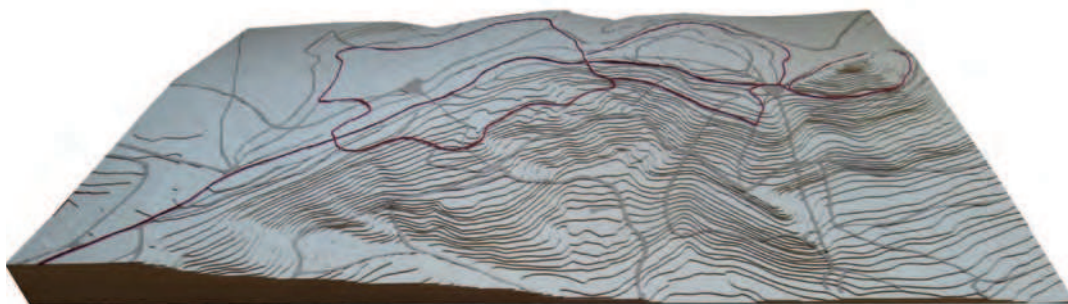
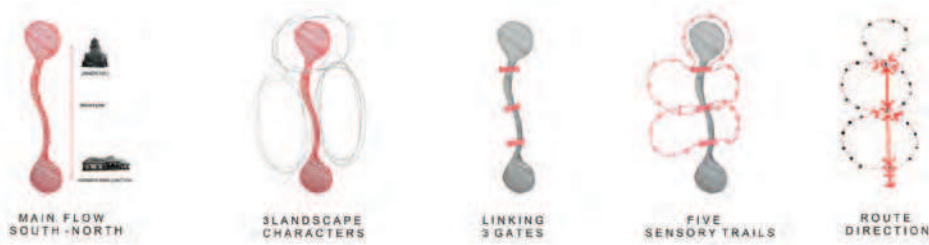
The method to elaborate the project has been developed in three main phases: The thesis begins by introducing

Normafa and its territory; the analysis of the site and its natural and cultural background. The second part, titled Sensory approach, introduces a theoretical framework and concepts dealing with the relationship between senses, place and landscape. This phase also identifies the natural and cultural elements of Normafa through sensory experiences. Finally, the third part is dedicated to the conceptualization and development of a landscape project that goes from large scale design (or network level), with the master plan of a series of sensory-trails that connect with the landscape of Normafa, to small scale design (or object level), with the projection of specific sensory devices designed as interpretative links to communicate unique experiences of the site for each user. ©

• ECLAS Student Award



Pict. 1: Normafa topography
Pict. 2: Normafa. Main functions + activities
Pict. 3: Concept
Pict. 4: Model and diagrams
Pict. 5: Gate and sensory trail





OPEN SPACE DESIGN PROJECT

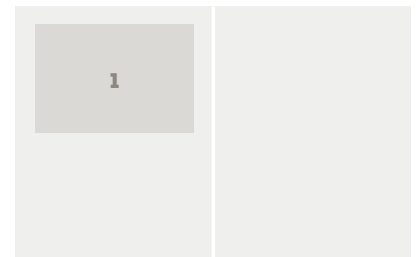
*Author: Melike Kaymaz Akkaya
Supervisor: Dr. Eszter Bakay*

This diploma work deals with Fenerbahce Park, located in Istanbul. This park was chosen because of its place, history and size. The semi-island park has more than 2500 years of history. All the empires which occupied Istanbul have had an effect on the island.

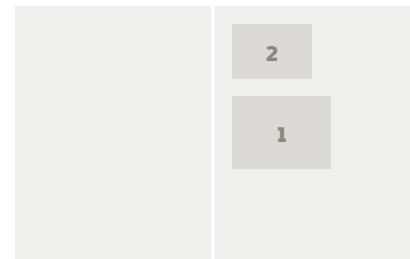
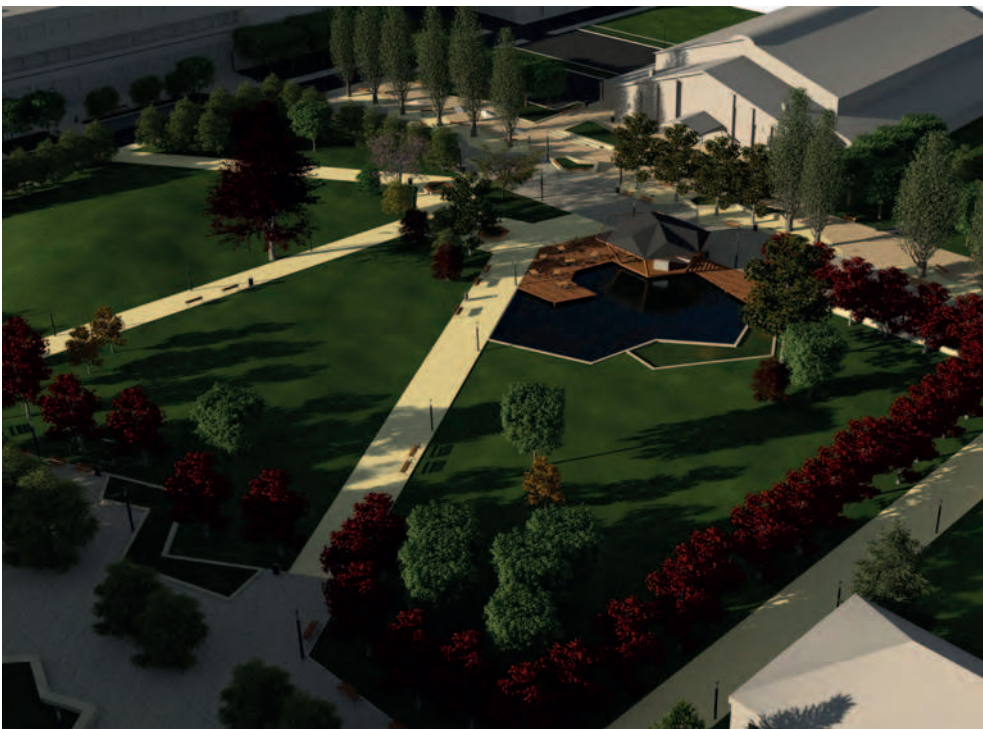
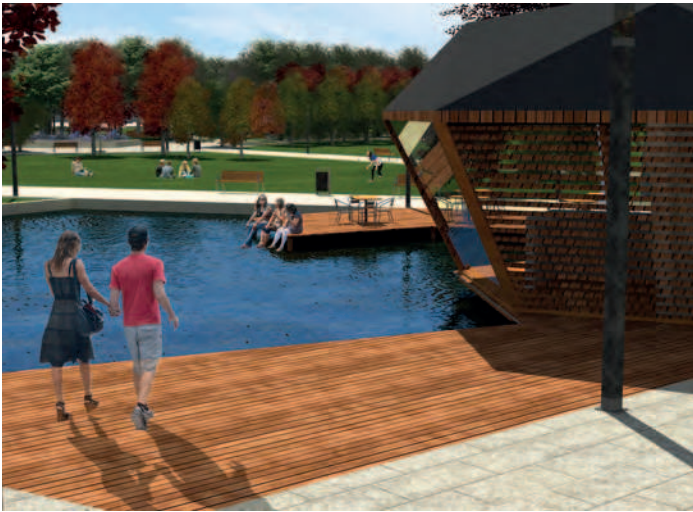
After the 1950s, the park fell into disrepair. In 1990, the park was redesigned by the Touring and Automobile Club of Turkey. Celik Gulersoy was the chief designer. It was a major change for the island. Since then, things haven't changed that much. The park has been mostly neglected. The parks unique atmosphere comes from its original design. For this reason, this diploma work can be considered as a historic garden conservation project.

This thesis proposes less demanding and more sustainable solutions with its design concept. The buildings, the trees

and especially the atmosphere were preserved. The main considerations were breaking the bounded feeling by the sports facilities, creating more space to improve connection with the sea using new balconies along the edges, reconstructing the paths, cafes and flower beds, and adding more characteristic patterns and unity to street furniture and lighting. Through these changes it was aimed to improve the current situation. The historic/romantic atmosphere influenced the materials, shapes of structures and purposed functions. Since the English landscape gardens are also historic and romantic, some ideas were taken from this movement such as trellises, romantic walking paths with rills and view terraces.



Pict. 1: General Design Plan and 3 Visualizations of the Balcony (Core Area)



Pict. 1: Bird's-eye view of the design area

Pict. 2: The café pavilion with the lake

EDUCATION CENTRE - VÁC

Author: *Nikoletta Dudas*

Supervisor: *Dr. Balogh Péter István*

This diploma project concentrates on an education and sports center located in the outskirts of Vác. The detailed design site is a two hectare, flat, empty area which is partly used as an informal parking lot. This is a place frequently used by students as three high schools, a sports hall and a dormitory building are located nearby. The main design challenge was the current lack of function, which is why students do not occupy the site after school hours.

My aim was to create a unique and adaptable square for the students, which is able to react to the continuously changing context of the area.

The most important thing was to combine the education and sport functions with additional programs and recreational opportunities.

My concept consists of characteristic smaller squares which all have individual names and also different programs. I filled the area with functions including skateboarding, an outdoor stage, a picnic area, and a modern café pavilion surrounded by an artificial lake. ©