

## Communicationes Breves

### A *Mesodorylaimus* Species (Nematoda) with Two Vulvae, Separated Ovaries and Different Tail Shapes

By

M. ABOU-EL-NAGA\*

Bivulvate nematodes are very rare. To my knowledge this is the first report of a bivulvate condition in the family Dorylaimidae.

Bivulvate forms have been reported in *Mononchus muscorum* (DUJARDIN) by CASSIDY (1933), in *Anatonchus tridentatus* (DE MAN) by HIRLING (1969) and in *Scutellonema bradys* (STEINER & LEHEW) by CAVENESS (1971). The literature on bivulvate forms in nematodes has also been reviewed by ANDRÁSSY (1960) and GERAERT (1963).

During the examination of specimens of the genus *Mesodorylaimus* in samples collected from the village Szendehely in Hungary (about 40 km north-east of Budapest), one specimen having two vulvae was observed when extracting nematodes from hornbeam-leaves. Also several normal females of the same species (*Mesodorylaimus* sp. aff. *aberrans* SIDDIQI) were found.

The bivulvate specimens resembled the normal females, the vulvae and separated ovaries appeared to be equally developed. Both vulvae were in normal ventral position. The measurements of this peculiar animal were as follows:  $L = 1.94$  mm;  $a = 40.8$ ;  $b = 5.7$ ;  $c = 22$ ;  $V_1 = 49\%$   $V_2 = 51.5\%$ ;  $ovary_1 = 21\%$  of body length;  $ovary_2 = 22\%$  of body length; distance between vulvae =  $50 \mu\text{m}$ .

Some different tails of the same nematode specimens were observed in samples obtained from the above mentioned locality and from the Vértes Mountains (about 50 km west of Budapest).

The specimens are deposited at the Department of Plant Protection, Al-Azhar University, Cairo, Egypt.

\*Dr. Mohamed Abou-El-Naga, ELTE Állattrendszertani és Ökológiai Tanszék (Zoosystematical and Ecological Institute of the Eötvös Loránd University), 1088 Budapest, VIII. Puskin u. 3.

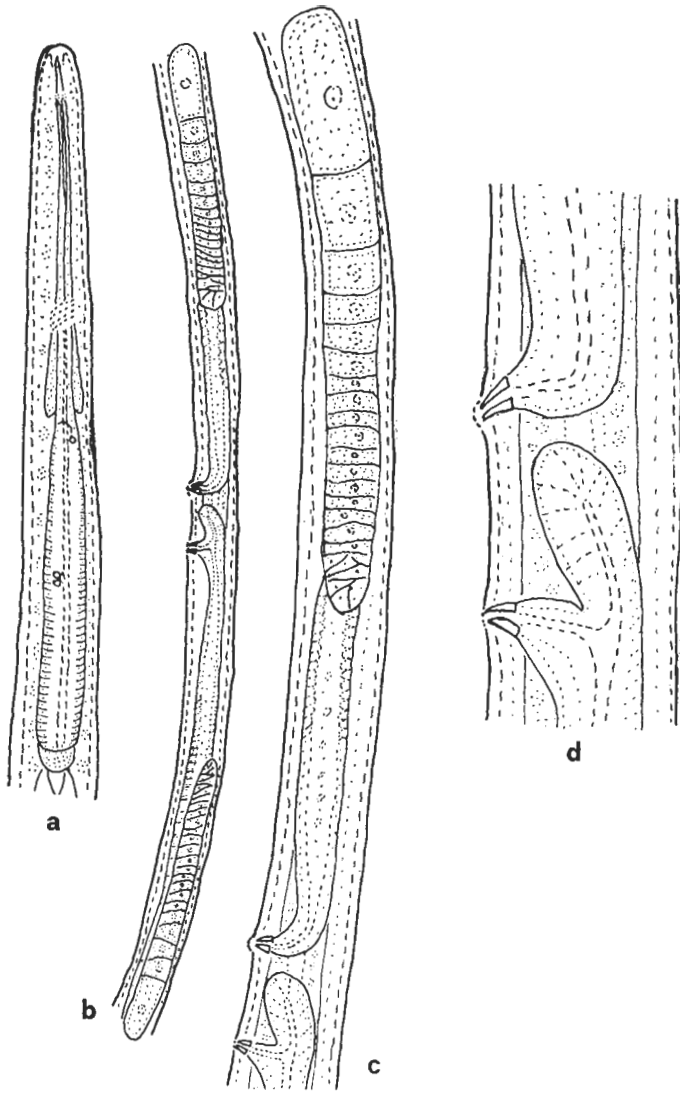


Fig. 1. *Mesodorylaimus* sp. with two vulvae. a: anterior end; b: vulvar region with two vulvae and separated ovaries; c: anterior gonad; d: both vulvae

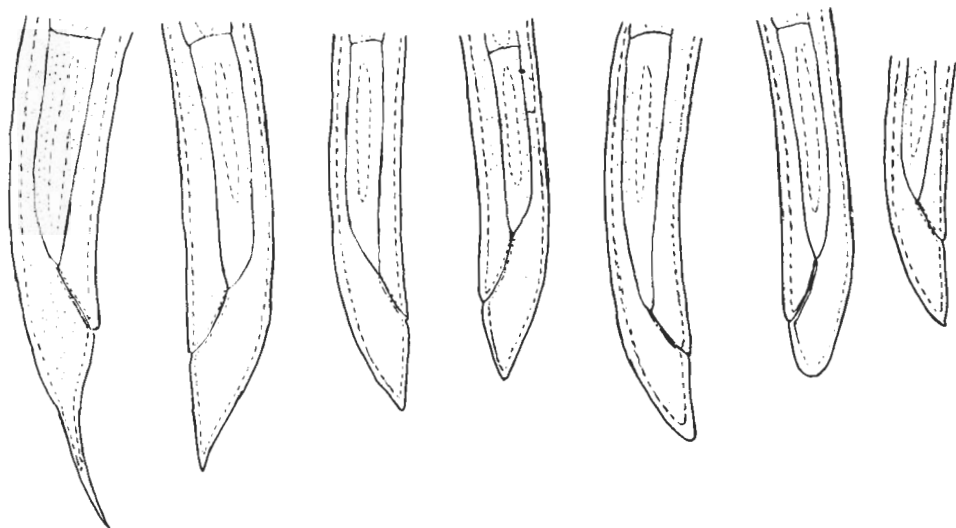


Fig. 2. *Mesodorylainus* sp. showing different tail shapes

#### REFERENCES

1. ANDRÁSSY, I. (1960): *Ein Nematode (Tobrihus sp.) mit doppelter Vulva.* — Opusc. Zool. Budapest, 3: 111—116.
2. CASSIDY, G. H. (1933): *A bivulvar specimen of the nematode Mononchus muscorum (Dujardin) Bastian.* — Journ. Wash. Acad. Sci., 23: 141—144.
3. CAVENESS, F. E. (1971): *Scutellonema bradys (Steiner & LeHew) with two vulvae and malformed conduct.* — Journ. Nematol., 3: 95.
4. GERAERT, E. (1963): *Aporcelaimellus female with two vulvae.* — Nematologica, 9: 302—303.
5. HIRLING, W. (1969): *Anatonchus tridentatus (de Man, 1876) De Coninck, 1939 mit zwei Vulvae.* — Nematologica, 15: 161—162.